

Installation and Operating Manual

Drying Cabinet

TS-4175 WW



Thinking of you
Electrolux

CONTENTS

•	<i>THIS USER MANUAL & DATA PLATE DETAILS</i>	Page 2
•	<i>IMPORTANT SAFETY INSTRUCTIONS</i>	Page 3
•	<i>INSTALLATION INSTRUCTIONS</i>	Page 4
•	<i>OPERATING INSTRUCTIONS</i>	Page 8
•	<i>MAINTENANCE INSTRUCTIONS & TECHINCAL DATA</i>	Page 9
•	<i>DIMENSIONS</i>	Page 10
•	<i>WIRING DIAGRAM</i>	Page 11

ABOUT THE OPERATING MANUAL

The contents of this manual describe the functions of the TS-4175WW drying cabinet and how it should be used. It also includes instructions for installation and maintenance.

In addition to this Operating Manual there is a Service Manual and Spare Parts List. The Service Manual is intended for use by personnel trained to service this product.

Peko Equipment Limited
Peko House
Northbridge Road
Berkhamsted
Herts. HP4 1GE

Tel: 01442 872323
Fax: 01442 866900
www.pekodryingcabinets.co.uk

PEKO Equipment Limited reserve the right to make improvements and/or changes to the cabinet and to the contents of this manual:

DATA PLATE DETAILS



Located inside the cabinet
on the left hand side panel

Your Reference

Date of purchase:

Serial number:

IMPORTANT SAFETY INSTRUCTIONS

These instructions and warnings have been provided to help avoid misuse and unnecessary risks, and should be read before the cabinet is installed and used.

NOTE. *Keep this manual in a safe place so that it is always available for future use.*

CAUTION: To reduce the risk of fire, electric shock, or injury when using the appliance, follow basic precautions including the following:

- Read all the instructions before using the appliance.
- Do not dry articles that have been previously cleaned in, washed, soaked or splashed with petrol or other flammable or explosive substances as they give off vapours that could ignite or explode.
- Do not allow children to play on or in the appliance. Close supervision of children is required whilst the cabinet is in operation.
- Do not install or store this appliance where it will be exposed to the weather.
- Do not tamper with the controls.
- Do not repair or replace any part of the cabinet or attempt any servicing unless specifically referred to in this manual.
- Do not use fabric softeners or products designed to eliminate static unless recommended by the manufacturer.
- Do not use heat to dry articles containing foam rubber or similar textured rubberised materials.
- Keep area around the exhaust opening and adjacent areas free from the accumulation of dust, lint and fluff.
- Check the exhaust ducting terminal grille for any blockages or build-up of lint, and clean regularly.
- The interior of the appliance and the exhaust duct should be cleaned periodically by a competent person.
- The manufacturer accepts no liability for repairs carried out:-
 - a) by unauthorised personnel.
 - b) use of non-standard parts.

WARNING LABELS



Affixed to rear inside panel



Underside of heater cartridge -
Adjacent to fixing bolts

INSTALLATION INSTRUCTIONS

UNPACKING

Check for external signs of distress to the packaging. If you suspect that the contents may be damaged then inspect immediately. Any damage should be recorded on the carriers delivery documents at this time. Any damage should also be reported to your supplier within 3 days.

Remove all packaging material. Do not use sharp implements which could damage the cabinet.

After unpacking, check that the cabinet is in good condition. Any damage or shortages should be immediately reported to the supplier.

NOTE. Check that all restraining tape and protective polystyrene buffers are removed from inside the cabinet.

Checklist of items supplied with the cabinet.

- 2 x Hex head coach screws, washers and wall plugs.
- 2 x Stainless steel blanking plates.
- 4 x Lint filters.
- 4 x Stainless steel garment hangers.
- User / Installation manual.

ACCESS

The cabinet, as supplied, will require a clear opening through doorways of:-
Height - 2000mm. Width - 780mm.
(not including transport pallet)

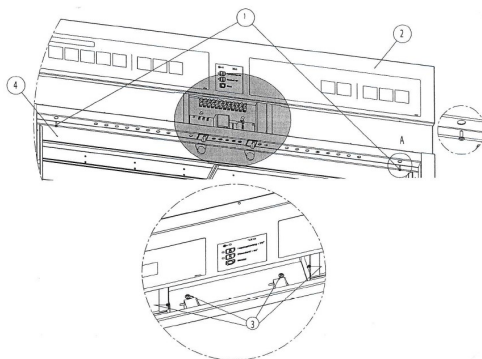
The heating and control module can be removed to reduce the height, and the right hand door can be removed to reduce the width of the cabinet to the minimum dimensions:-
Height - 1790mm. Width - 755mm.

SERVICE MODULE REMOVAL

To remove the upper section of the cabinet:-

- Remove the front fascia panel - unscrew two fixings (ref.1) accessible from the underside of the door frame. Slide the panel (ref.2) upwards taking care not to damage the attached control pad ribbon cable.
- Loosen the four screws (ref.3) securing the door switch component bracket and slide back fully along the slot.
- Remove four screws (ref.4) from inside the control module, two at each end.
- Unscrew the 4 hex. head bolts securing the control module. These can be accessed from inside the cabinet.

The control module can now be removed and the overall height of the cabinet is reduced by 220mm.



WARNING! Do not drag the cabinet over the floor as damage may occur to the finished floor covering or to the adjustable levelling feet. Always lift first using the straps supplied, then move the cabinet into position.

INSTALLATION INSTRUCTIONS (cont.)

INSTALLATION

NOTE. *The drying cabinet should not be installed in a location where any doorways or safety exits are blocked when the cabinet doors are open. If possible, choose a location in close proximity to an external wall to reduce the length of ducting required.*

NOTE. *The drying cabinet is only designed for operation indoors in a dry environment at a temperature above freezing point.*

The cabinet should stand level on a flat surface. Adjust using the levelling feet and ensure that the top edges of the doors are in alignment.

The cabinet must be secured to a solid wall using the two angle brackets supplied. These are located on the top panel of the cabinet. The brackets can be removed and fixed to the wall using the fittings supplied before positioning the cabinet - the centre line dimensions are as shown on page 10. The bracket is slotted to allow for levelling the cabinet on uneven floors. Note, the cabinet can be offset from the wall to avoid any obstructing pipes or skirting boards up to 90mm. When satisfied that the cabinet is level and the doors are aligned, the bracket can be fixed to the top panel using the hexagon head bolts.

Other methods of fixing the cabinet should be considered appropriate to the type of wall construction.

Care must be undertaken to avoid any service infrastructure before drilling the wall.

WARNING !

The drying cabinet should not be used without being screwed to a wall due to the risk of it tipping forwards.

LINT FILTERS

The four rectangular lint filters should be fitted into the support channels, two to the rear and two to the front of the underside of the cabinet interior.

GARMENT SUPPORT BRACKETS

The cabinet is supplied with four garment support brackets that can be slotted into the airway channel as shown below. Two blanking plates can be fitted to the airways if the cabinet is not fully loaded.



INSTALLATION INSTRUCTIONS (cont.)

EXHAUST CONNECTION

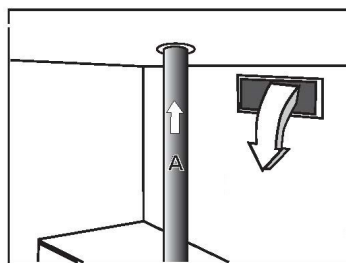
The cabinet must be connected directly to an exhaust ducting system that terminates on the outside of the building. This could be through the roof or on an external wall. The outlet spigot on top of the cabinet is 125mm diameter. The effective length of the ducting 'A' is 23m of straight pipe. If the diameter of the pipework is increased to 160mm, the effective length is 70m. The effective length of the system will vary depending on the type of ducting material and the number of bends used. The cabinet operates more efficiently with the minimum length of ducting and the unit should be positioned on an external wall if possible.

Notes:

- Rigid metal or plastic pipe is preferred although flexible ducting can be used for some installations within close proximity to an outside wall.
- Wall vented systems, including fixed window pane applications, should terminate with an open louvre grille.
- Roof vented systems should be fitted with a weather cowl or a downward facing bend.
- Standard tumble dryer back draught shutters should not be used.
- Ensure that the ducting and terminal fittings are cleaned on an annual basis.

ROOM VENTILATION

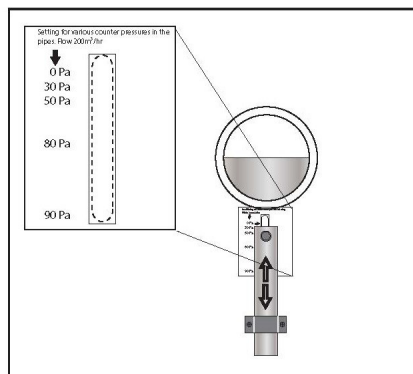
The cabinet has an exhaust airflow of up to 250 cubic metres per hour. This air has to be sourced initially from within the room where the dryer is installed. It is important to ensure that there is a continuous supply of fresh air into the room. The air intake into the cabinet is via the door surrounds - sealing gaskets are not fitted for this reason. The recommended free area of the air intake into the room must not be less than 142cm². The resistance caused by grilles or shutters must not exceed **10 Pa (0.1 mbar)**.



NOTE. The exhaust ducting should not be connected into an existing chimney, boiler flue or tumble dryer system.

Commissioning the ducting system

To optimise the efficiency of the cabinet the damper situated on top of the unit should be adjusted to a setting that corresponds with the pressure drop in the ducting. The maximum permissible pressure drop is 70pa.



If the pressure drop is greater than this, an external fan must be installed. The dryer has electrical terminals inside the control console suitable for connecting an external fan. The fan would then operate only when the cabinet is in use. If several cabinets are installed adjacent to each other it is advisable to fit a separate ducting system to each unit. If a single ducting pipe is to be considered for a multi unit installation, it would be advisable to seek professional advice from a specialist heating and ventilation engineer.

INSTALLATION INSTRUCTIONS (cont.)

ELECTRICAL CONNECTION (U.K.)

WARNING! All electrical work should be carried out only by a suitably qualified and competent person, in strict accordance with national and local safety regulations.

Ensure that power is not supplied to the appliance while installation work is being carried out.

The cabinet is supplied as standard suitable for connection to:-

400 volt three phase and neutral,
(fuse rating 3 x 10 amp).

Convertible to:-

230 volt single phase (fuse rating 32 amp).

Other supply voltage options available on request.

The voltage, total load and fuse rating details can be found on the data plate on the inside of the cabinet.

The cabinet is **not** supplied with a mains cable. The size and type of cable should be determined by a qualified electrician to suit the power supply and the location of the installation.

Connection should be made via a suitable isolator which complies with national and local safety regulations, and the on/off switch should be easily accessible for any servicing work. When switched off there must be an all-pole contact gap of 3mm in the isolation switch (including switch, fuses and relays according to VDE 0660). For additional safety it is advisable to include a residual current device (RCD) within the installation.

All supply cables into the cabinet should be clamped using the glands fitted to the top panel. The top fascia panel should be removed to access the terminal connecting block. Remove six screws on the top panel positioned along the top front and return edge of the cabinet. The fascia panel can now be removed. Ensure that all panels are refitted before the machine is operated.

Connecting external devices

A terminal block inside the control console is wired and labelled to accept an external ducting fan if required.

WARNING!

This appliance must be earthed. If in any doubt, consult a competent person.

OPERATING INSTRUCTIONS

CONTROLS

The cabinet is supplied with a simple to use touch pad with two heat settings for ease of use; *Impregnering* (Reproofing) at 75°C, and *Standard* (Normal drying cycle) at 60°C. Both options are controlled by moisture sensors and will automatically switch the power off when then the garments have reached the correct level of dryness. An automatic cool down period of approximately 8 minutes is built into each cycle.

To operate the drying cabinet select the appropriate setting, then press start. A blue neon will illuminate against the programme selected. Initially the hot air will be directed through the support hangers to dry the inside of the garments. When the sensors have detected the correct level of dryness the servo motors will divert the air flow through the side ducting channels to dry the outer layers of the garments.



Touch pad control panel

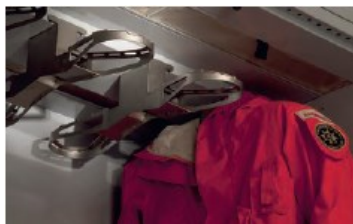
The control panel also has two warning lamps - see troubleshooting section.

USER GUIDE

WARNING! To reduce the risk of fire, electric shock, or injury, read the important safety instructions on page 3 before operating this appliance.

LOADING THE CABINET

The garment support brackets can be removed from the cabinet for ease of loading. The braces of the trousers are looped over the bracket then the jacket is hung over the top of the hanger with the front straps secured. The cabinet is designed to hold four suits however if only two or three sets are to be dried it is advisable to blank off the unused airways with the stainless steel plates supplied. The cabinet can be used to dry boots and other station apparel and general laundry items that are suitable for the temperatures stated on the control pad.



TROUBLESHOOTING

In case of overheating the drying process will stop and three lamps on the control panel will flash. Check and clean the filter located inside the top panel of the cabinet if necessary. When the temperature has cooled down to its operating level, only the overheat warning lamp will flash. It is now possible to re-set by pushing and holding the *Stop* button for 10 seconds.

The cabinet will stop automatically if the filter is blocked and the *Clean Filter* warning symbol will flash. To remedy, clean the filter and re-set by pressing and holding the stop button as above

WARNING! Do not place laundry or any other items on top of the cabinet.

MAINTENANCE INSTRUCTIONS

CLEANING

NOTE. High pressure water jet cleaning should not be used on this cabinet. The use of bleach, caustic solutions and abrasive materials is not recommended.

The cabinet should be cleaned (inside and out) with a damp cloth using a mild detergent solution.

Dust will collect on the top of the cabinet, especially around the air intake. This can cause operational faults within the cabinet, as well as pose a fire hazard.

To avoid any potential problems, the top of the cabinet should be vacuum cleaned at least once a year, or more frequently depending on the location of the cabinet and its application.

A lint filter, situated inside the cabinet and above the hanging rail assembly, should be periodically removed and cleaned with a soft brush.

TECHNICAL DATA

Capacity: 4 Complete suits, jacket and trouser, 15kg.

Evaporation rate: 81 g/min.

Electrical supply: 400V AC 50Hz,

Fan motor: 2 x 85 W.

Heating element: 6kW

Total load 6.2kW

Overheat cut-out: Yes.

Timer: Automatic sensor

Dimensions: *Height:* 2000mm.

Depth: 780mm.

Width: 1200mm.

Net Weight: 200kg.

Colour: Grey/Blue

MANUFACTURING APPROVALS

Protection class IP X4



Marked product

PERFORMANCE SPECIFICATION*

SETTING

Reproofing

Standard drying cycle

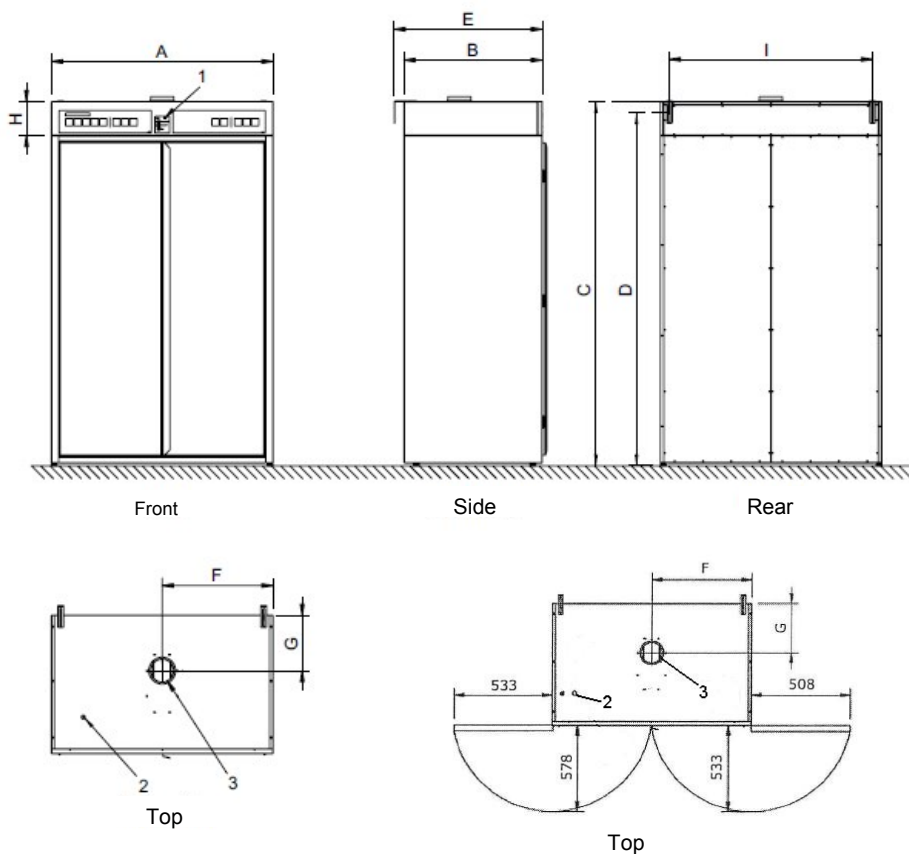
TEMPERATURE

75 deg. C

60 deg. C

*Values quoted above are approximations and will vary with type of load and ambient conditions

DIMENSIONS

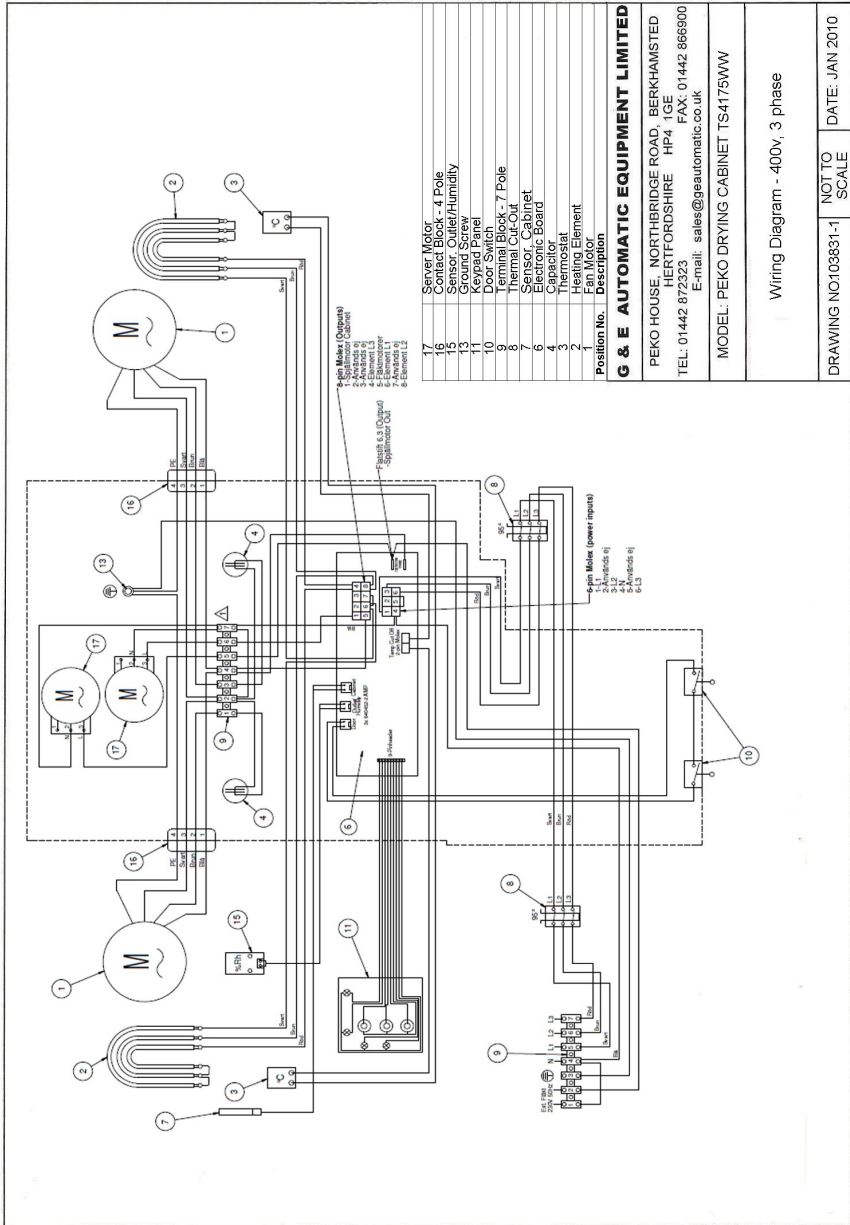


Key to dimensions

A	B	C	D	E	F	G	H	I
1200	780	2000	1910	870	600	300	205	1100

1. Control Panel
2. Mains Cable Entry
3. Exhaust Duct Spigot : 125mm diameter

WIRING DIAGRAM - 400V 3N AC 50Hz



PEKO

EQUIPMENT LIMITED

**Peko House
Northbridge Road
Berkhamsted
Herts.
HP4 1GE**

Tel: 01442 872323

Fax: 01442 866900

www.peko.co.uk